

**Appendix 4 – Update on Health and Transport**

**Transport for Health Working Group Terms of Reference - October 2009**

**Introduction**

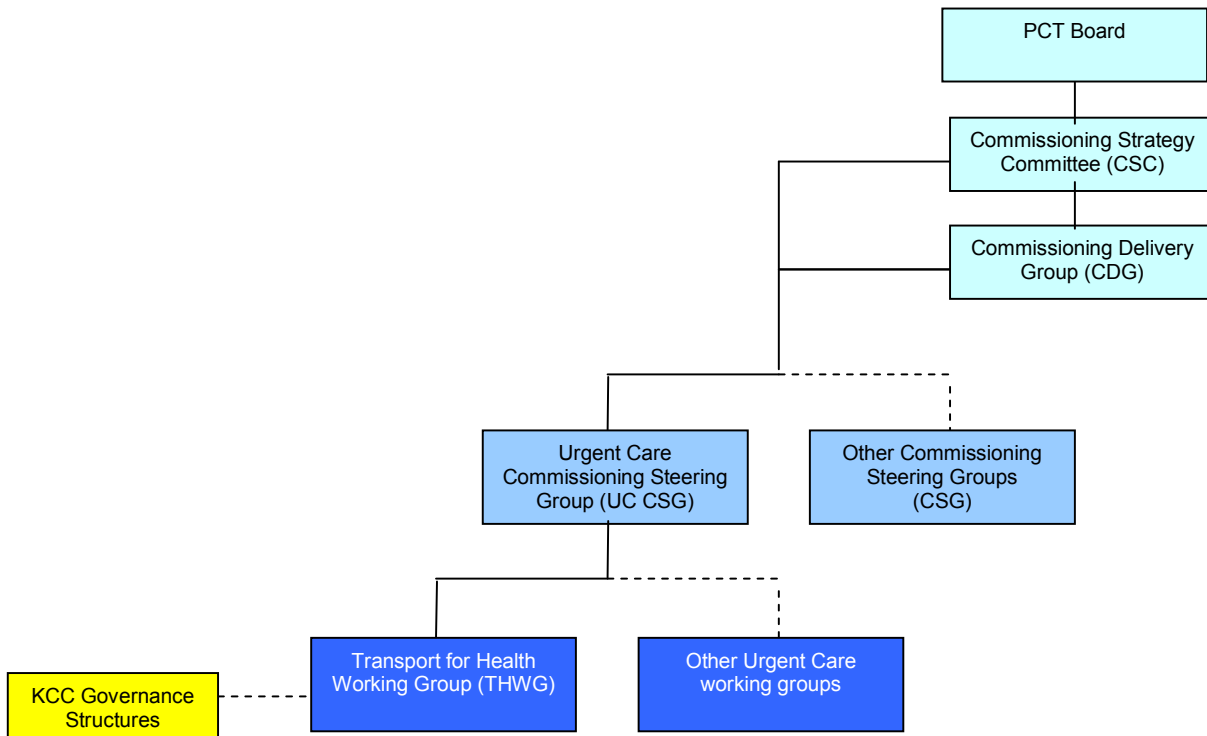
This paper details the Terms of Reference (TOR) for the Transport for Health Working Group (THWG), joint chaired by NHS Eastern and Coastal Kent and Kent County Council (KCC).

**Purpose of Transport for Health Work Group**

The main purpose of the THWG will be to facilitate effective communication between ‘transport for health’ stakeholders across the NHS Eastern and Coastal Kent area, including specific links with Medway and West Kent.

The focus for the group will be all patient transport services, community transport schemes, and public transport, with service improvement being the cornerstone of the partnership work.

The group will be commissioning lead and work towards the intentions stated in the “Commissioning Transport for Health” summary report of the NHS lead transport event on 18/05/09, and the Kent wide health and transport day, hosted by KCC on 22/09/09. The commissioning governance structure for NHS Eastern and Coastal Kent is as follows:



The main objectives of the group are to:

- Improve partnership working between the voluntary sector, the NHS, KCC, district councils, transport providers and all other appropriate stakeholders;
- Establish a document that links health and social transport provision in Kent, that is patient/public facing and which describes all available options and processes;
- Act on any existing service modifications/improvements required to meet the needs of the differing localities;
- Support a Joint Strategic Needs Assessment that advises on a set strategic direction for the PCT and partner organisations to improve Patient and Community Transport Services;

### Membership

The core membership for the group will be as follows:

Name	Title & Role
Andrew Cole	Head of Urgent and Continuing Care, NHS ECK <ul style="list-style-type: none"> <li>• Joint Chair</li> <li>• Ensures alignment with Urgent Care Commissioning Strategy.</li> </ul>
David Hall	Head of Transport and Development, KCC <ul style="list-style-type: none"> <li>• Joint Chair</li> <li>• Ensures alignment with KCC policy objectives</li> </ul>
Elizabeth Insley	Finance Manager (Commissioning), NHS ECK <ul style="list-style-type: none"> <li>• Provides financial expertise and background knowledge</li> </ul>
Kenneth Cobb	Transport Integration Manager, KCC Commercial Services <ul style="list-style-type: none"> <li>• Provides regional public transport expertise</li> </ul>
Tony Kinnear	Head of Healthcare Transport, EKHUFT <ul style="list-style-type: none"> <li>• Provides East Kent Patient Transport expertise</li> </ul>
Paul Barratt	Head of PTS, SECamb <ul style="list-style-type: none"> <li>• Provides PTS expertise for SECamb and SEC region</li> </ul>
Zoe Fright	Senior Lead Commissioner (Urgent Care), NHS ECK <ul style="list-style-type: none"> <li>• Interim lead on PTS for NHS ECK</li> </ul>
Frances Outrim	Head of Business Management, ECK Community Services <ul style="list-style-type: none"> <li>• Provides link to Community Services in ECK</li> </ul>
Tim Woolmer	Corporate Policy Manager, KCC <ul style="list-style-type: none"> <li>• Ensure culmination of work streams across Kent</li> </ul>
Sue Sawyer/ Bridget Owen	Transport Manager, Ashford/Dover Volunteer Centres <ul style="list-style-type: none"> <li>• Provides links to voluntary/community organisations</li> </ul>
Diane Aslett	South East Regional Lead, Age Concern <ul style="list-style-type: none"> <li>• Provides expertise to inform service development</li> </ul>
Robert Miller	Commercial Manager, Stagecoach Bus <ul style="list-style-type: none"> <li>• Links to main bus operator</li> </ul>
Stephen Carey	Public Representative <ul style="list-style-type: none"> <li>• Provides critique and scrutiny</li> </ul>

John Fletcher	Public Representative • Provides critique and scrutiny
Anne Mcilroy	PbC Support Manager, NHS ECK • Links to GP surgeries across East Kent
Louise Murrell	Development Worker, Kent LINK • Provides critique and scrutiny
Colin Evans	Local Bus Planner (East Kent), KCC • Provides bus planning and route expertise
Nigel Whitburn	Community Development Manager, Rural Kent • Provides Voluntary/Community representation
Martin Ayre	Senior Corporate Policy Manager, KCC
Sally Benge	Partnership Officer – Kent Highway Services
Sheila Flynn	Senior Transport Planner, Canterbury City Council
Alex Hine	Transport Manager, Maidstone & Tonbridge Wells Transport
Dave Laws	Chairman, East Kent Association of Older Citizens Forums
Chris Lewis	Commissioning Assistant, NHS West Kent
Martine McCahon	Commissioning Manager, NHS West Kent
Steve Pay	Transport Integration, KCC
David Plumstead	Transport Rep, East Kent Pensioner's Forum
Jill Read	Regeneration Projects Officer, Swale Borough Council
John Rodriguez	Assistant Director of Public Health, NHS ECK
David Short	Planning Policy & Ed Manager, Shepway District Council
Santosh Springer	Graduate Trainee in Commissioning, NHS West Kent
Matthew Arnold	Business Development Manager, Arriva
Malcolm Barry	
Mick Sutch	KCC

### Frequency of Meetings and TOR Review

The group will initially bi-monthly and eventually quarterly once the work plan is developed and underway.

A review of the TOR should occur every 3 months.